



Rudolf-Diesel-Straße 17
D-27711 Osterholz-Scharmbeck
Telefon: 04791/96411-0
Fax 04791/96411-15
E-Mail: info@hansatec.de



**FORGED FROM
A SINGLE PIECE.**



**THE ALL-IN-ONE GENIUS
FOR THE SHIPBUILDING INDUSTRY.**

Lifting point. Lashing point. Fall protection anchorage point.



THE INOX-ABA.

WLL: 1,6 t, PSA: 1-2 pers.



THE INOX-ABA.

Stainless and corrosion-resistant. The shipbuilding specialist.

The all-round loadable, stainless anchor point:

- Loadable from any direction and increased WLL in the plane of the ring.
- 4:1 safety factor for lifting (WLL).
- 2:1 safety factor for lashing (DaN).
- PSA: 1–2 pers.
- Wear markings on the inside and outside of the lift bail for easy recognition of discard readiness.
- Closed and circumferential fillet weld prevents sub-corrosion.
- Made of Duplex Steel 1.4462.

Tested and certified
in accordance
with TS 16415/12
and EN 795/12.

Good resistance to pitting and
surface corrosion.
Reduced nickel content.

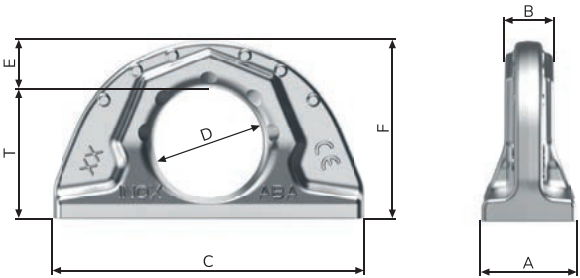
TECHNICAL DATA.

INOX-ABA – can be loaded on all sides.

Type	WLL [t]	PSA [pers.]	Weight (kg/unit)	T [mm]	A [mm]	B [mm]	C [mm]	D [mm]	E [mm]	F [mm]	Welding seam	Ref. No.
INOX-ABA 1,6t	1,6 (5) ¹	1-2	0,45	41,5	30	16	100	35	16	57	a4	7912397

¹ () = Higher WLL when loaded at ring level.

Subject to technical changes!



WLL angle at ring level and with lateral load.

